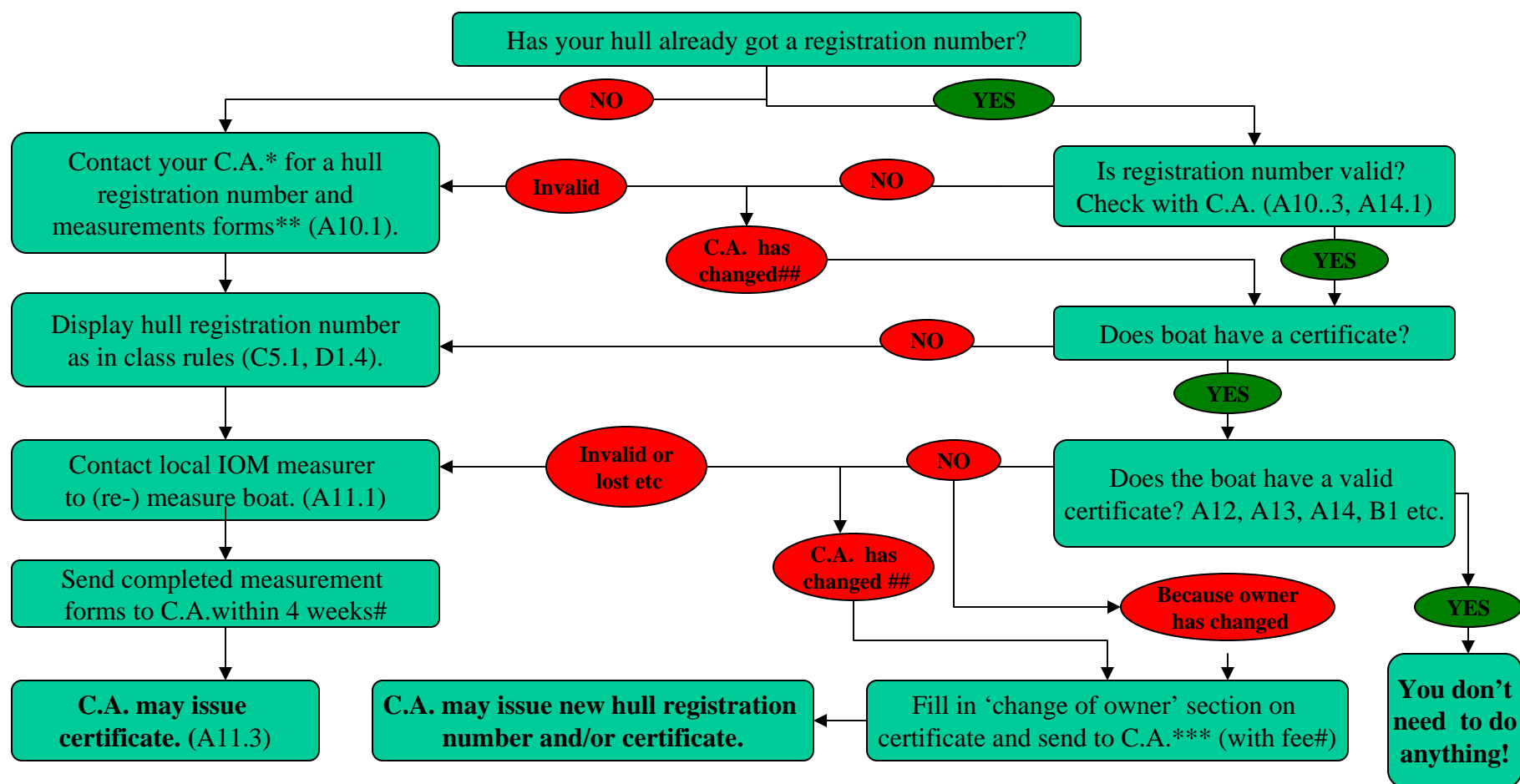


## How do I register and/or get a certificate for my IOM?

**Remember** – Your local club is the best place to start for advice and to put you in contact with your national Certification Authority (C.A.) and local IOM measurer.



\*Your Certification Authority may be your MNA, DM or class secretary/registrar, best to check with your local club.

\*\*Your local IOM measurer usually has measurements forms.

# You may have to send a (re-) certification fee. (A11.2)

\*\*\*New C.A. will ask for original measurement forms from old C.A. (A11.4)

## The hull registration and certificate must be from the same country where you're registered as a IOM class member/sailor.